

# Statement of Qualifications Rail Services





## » Table of Contents

---

<b>SECTION A</b>	Firm Profile.....	<b>5</b>
<b>SECTION B</b>	Project Management.....	<b>9</b>
<b>SECTION C</b>	Services .....	<b>13</b>
<b>SECTION D</b>	Relevant Experience.....	<b>17</b>
<b>SECTION E</b>	Rail Team .....	<b>33</b>
<b>SECTION F</b>	References .....	<b>45</b>



» FIRM PROFILE

# » Introduction



## CONTACT

### JASON REA

President

480 Wildwood Forest Drive  
Suite 500  
The Woodlands, Texas 77380  
281.210.1797 direct  
713.201.6397 cell  
jrea@ljarail.com

### JOHN JEROME

Vice President

480 Wildwood Forest Drive  
Suite 500  
The Woodlands, Texas 77380  
515.570.1046 cell  
jjerome@ljarail.com

### MIKE BAKER, PE

Rail Infrastructure Lead

3600 W Sam Houston Parkway S  
Suite 600  
Houston Texas 77042  
713.953.5030 direct  
979.248.5429 cell  
mbaker@ljinfrasturcture.com

LJARail.com

Our reputation is built upon a legacy of trust – among our staff and our clients – and this mutual trust continues to drive our commitment to deliver the best solutions to complex building and business challenges.

LJA Rail is backed by the depth and diversity of our parent company, LJA Engineering, Inc. LJA Engineering is an Engineering News-Record Top 500 National Firm offering full-service engineering and consulting services to public and private sector clients. With over 1,900 employees in 52 offices, LJA offers full-service planning, engineering, environmental, surveying, and construction management to public and private sector clients. This allows us to leverage our resources from across the company, provide expertise-driven teams, deliver responsiveness to your specific needs, and individualize project solutions.

## MISSION

To be the design, construction, and construction management partner of choice for freight railroads and rail shippers in North America.

## DEDICATED FOCUS

Decades of experience as railroad employees give us a clear understanding of the intricacies of freight railroad engineering, construction, operations, and maintenance. We understand that efficient operations and low maintenance costs are a result of well thought out designs and no/low impact construction. Our first-hand knowledge allows our group to focus on these key criteria to anticipate potential challenges and address them before they have an impact on operations, a particular project, or program.

## RAIL SERVICES

LJA Rail offers proven experience and expertise in the development of rail facilities, including rail yards and intermodal terminals; rail served industrial facilities; transload facilities; structures; new rail corridors; maintenance, fueling, office, and other systems.

Our goal is to provide cost effective services to our clients that meet their standards and specifications. We will identify issues that may impact the projects schedule and cost, and provide solutions to minimize any associated risk.

## EXPERIENCE

LJA Rail brings a wealth of experience in railroad planning, design, construction, construction management, operations, and maintenance to its projects. We have worked closely with our freight railroad clients to develop projects and operating systems that maintain the effective use of real property and/or right-of-way for rail operations, including working with freight railroads to maintain railroad operations during heavy construction.

Our team is experienced in coordinating civil, track, and design with cutovers and construction staging in constrained areas with 24-hour freight operations under live track conditions.

LJA Rail is registered with the E-Rail Safe Program, and all of our team members have successfully completed Roadway Worker Safety training courses associated with Class 1 service providers.

*We understand that efficient operations and low maintenance costs are a result of well thought out designs and no/low impact construction.*

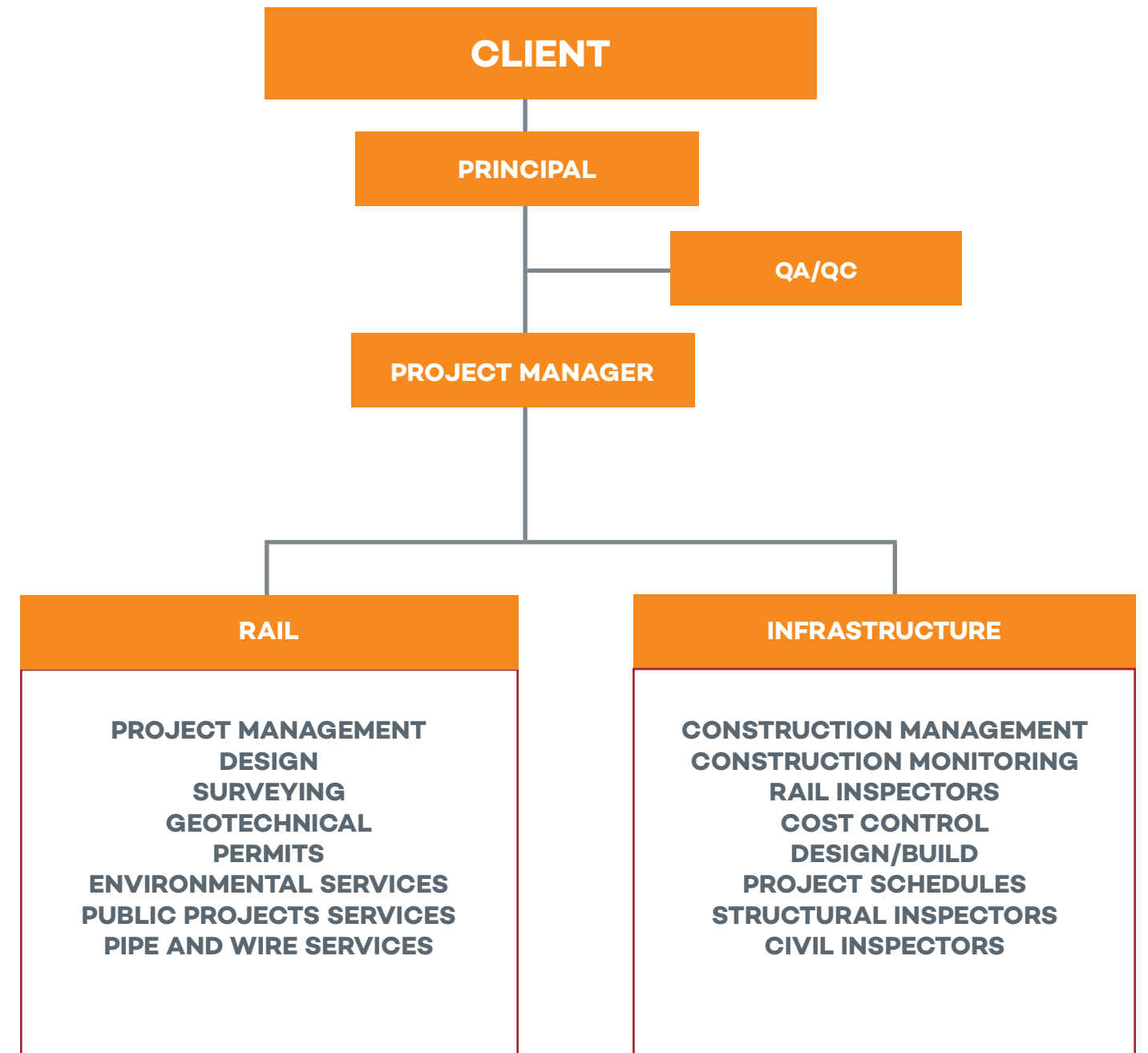
*It is our continuous goal to deliver products and services that*

*meet or exceed the expectations of the railroad industry we serve.*

A close-up photograph of a rusty metal rail track. The rail is the central focus, showing its textured, weathered surface. In the foreground, a large, rusty bolt is visible, partially obscuring the rail. The background is blurred, showing more of the track structure and some gravel. A semi-transparent white box with a blue border is overlaid on the right side of the image, containing the text '» PROJECT MANAGEMENT' in blue.

» PROJECT MANAGEMENT

*We provide the  
right team  
for your project.*



» SERVICES



# LJA RAILROAD SERVICES

LJA Rail is a group of railroaders completely dedicated to the freight railroad industry. Our group provides experience-driven services for each project. From planning, operations, and design to project and construction management, our freight rail experts are your go-to team to navigate the complexities associated with regulatory agencies, third parties, and other key stakeholders during project development. With a successful track record in freight rail project and program development, we offer a strong team with the knowledge and experience to deliver your projects on time and within budget.



## Design

Our dedicated freight rail team draws from decades of first-hand knowledge to design the structures, facilities, tracks, and associated infrastructure for rail projects of any level of complexity.

***We develop comprehensive freight railroad designs with cost efficiency, constructability, maintenance, safety, and optimized operations in mind.***

LJA Rail Services delivers valuable expertise from concept through construction services, providing value-added conceptual designs, plans and specifications, permitting, and program management.

## Maintenance & Inspections

- Bridge Inspection
- Bridge Maintenance
- Track Inspection
- Track Maintenance
- Bridge Management Program

## Design Services

Plans, specifications, and estimates for:

- Capacity Improvements: Yards, Sidings, and Main Tracks
- Automotive Facilities
- Container Intermodal Facilities
- Bulk Transfer Facilities
- Bridges and Structures: Concrete, Steel, Timber, and Culverts
- Yards, Shops, and Other Facilities

## Design Support Services

- Permitting and Support
- Signal Support
- SIT Yard Planning
- Operating/Track/Mechanical Compatibility Services
- Rail Car Movement Optimization
- Classification Yard Efficiency Planning

## Construction Management

As railroaders, we understand that active railroad environments require extensive coordination, not only to execute the design but also to maintain safety.

***Our team is adept and knowledgeable at staging civil, structural, track, and signal elements throughout the construction phase to help ensure safety, efficiencies and schedule adherence.***

All LJA Rail team members have completed the e-Rail Safe Program and Roadway Workers Safety Training and are poised and ready to provide the necessary program and construction management, procurement, inspection, and signal support services for a wide variety of freight rail infrastructure projects.

## Construction Services

- Safety Management and Oversight
- Survey
- Constructability
- Schedules
- Change Management
- Construction Estimates
- Construction Inspection
- Train Traffic Interruptions Minimalization
- Budget Maintenance
- Clean Audit Trail Maintenance
- Federal, State, and Private Funds Reporting and Reallocation
- Project Reporting
- Punch List Management
- As-Built Drawings/Audits
- Construction Close-outs

# LJA RAIL PERFORMANCE DRIVERS

## SAFETY

- Safe practices are our first priority
- Watch out for self and team
- Responsibility: Every employee; everywhere; every day

## Customer Focus

- Customer needs and expectations are at the forefront of our services
- Reliability and consistency
- Anticipate customer's challenges and address them early
- Customer satisfaction defines our success as professionals and as a company

## People

- Employees define who we are as a company
- Employees/shareholders actively engage in contributing to LJA's success
- Continuing education for professional development
- Mentor the next generation of railroad professionals

## Integrity

- Uncompromising principles and values lead our actions
- Honesty and honor in all that we do
- Build trust through consistently excellent performance

## Value

- Experience-based quality products and services
- Sound innovation
- Competitive pricing
- Deliver quality products and services on time and within budget

## Flexibility

- Quickly adjust as necessary to meet our customer's priorities
- Awareness of current management, market, and technology trends



» RELEVANT EXPERIENCE



LJA Rail has successfully completed numerous freight rail engineering design and construction management projects in the past ten years.

LOGISTIC CENTERS	
Cleveland Logistic Center (1,200 acres), Cleveland, TX	Design & CM
North Dallas Logistic Center (950 acres), Gunter, TX	Design & CM
Cadet Yard Logistic Center Concepts, San Antonio, TX	Design
Customer Concepts, Cleveland, TX	Design
CAPACITY IMPROVEMENTS	
Mainline & Siding, Ardmore, OK	Design & CM
Siding Extension, Somerville, TX	Design & CM
New Siding, Allen Farm, TX	Design
Siding Extension, Bragg, TX	Design
Siding Extension, Kountze, TX	Design
Siding Extension, Schriever, LA	Design
Siding Extension, Decatur, TX	Design & CM
Mainline Relocation (6.5 miles), Valley View, TX	Design & CM
BNSF / KCS Connection Track (6.0 miles)	Design
Second Mainline (6.0 miles), Milford, NE	CM
Siding Extension, Clarendon, TX	CM
Mainline Double Track (8.0 miles), Cleburne, TX	Design & CM
Mainline Double Track (8.0 miles), Crowley, TX	Design & CM
New Siding, Jasper, TX	Design
New Siding, San Augustine, TX	Design
New Siding, Center, TX	Design
New Siding, Tenaha, TX	Design
FACILITIES	
Auto Facility Expansion 2013, Pearland, TX	Design & CM
Cadet Siding & Loop Track, San Antonio, TX	Design & CM
Cadet Classification Yard, San Antonio, TX	Design & CM
Intermodal & Auto Facility Study, Houston, TX	Design
Intermodal Facility Logistics Park, Rosenberg, TX	Design
Bulk Material Transload Facility & Loop Track, Haslet, TX	Design
Automotive Processing Facility, Haslet, TX	Design

FACILITIES (continued)	
Horan Yard Expansion, Eagle Pass, TX	Design & CM
Lot 1 IMF Pavement (6.5 acres), Houston, TX	Design & CM
Intermodal Facility Expansion, Glendale, AZ	Design & CM
Facility Schematics Houston-Amarillo-Oklahoma City	Design
Auto Facility Expansion 2023, Pearland, TX	Design & CM
CM PUBLIC PROJECTS	
Loop 375 (7.5 miles new freeway), El Paso, TX	CM
IH 69 (4 overpass structures & BNSF bridge removal), Rosenberg, TX	CM
US 90 (3 overpass structures), Broussard, LA	CM
Sam Houston Tollway(2 overpass structures), Houston, TX	CM
Sam Houston Tollway / SH 249 (2 overpass structures), Houston, TX	CM
SH 249 Yarboro, TX	CM
SH 31 Corsicana, TX	CM
US 77 Waxahachie, TX	CM
Fish Creek Thoroughfare, Montgomery, TX	CM
Keenan Cut Off Rd, Montgomery, TX	CM
Meridiana Parkway, Manvel, TX	CM
Yard Bypass Track, Galveston, TX	CM
IH 45 Virginia Point, TX	CM
Summit Materials, Rosenberg, TX	CM
Scholl Lumber, Houston, TX	CM
US 69 Beaumont, TX	CM
EMERGENCY REPAIR/MAINTENANCE ON-CALL	
Duke Siding - Erosion Control / Sinkhole - Houston, TX	Design
Yard Derailment & Lead Realignment - Beaumont, TX	Design & CM
Yard Drainage Improvements - Dayton, TX	Design
IMF Lot 1 Pavement Repair - Pearland, TX	Design
South Yard "A" Lead Turnout Reconfiguration _ Houson, TX	Design
South Yard "B" Lead Realignment - Houston, TX	Design & CM
Casey Yard Lead Realignment - Houston, TX	Design & CM
Mainline Speed Increase - Enid, OK	Design
Mainline Track Adjustment @ Bridge - Corsicana, TX	Design
Mainline Derailment & Track Realignment - Algoa, TX	Design
BNSF / UPRR Crossing (Tower 17) - Rosenberg, TX	Design & CM
Derailment & Track Realignment (Milby Roundhouse) - Houston, TX	Design
Cadet Yard Survey & Crossover Improvements, San Antonio, TX	Design
Cadet Yard Depot Parking Lot, San Antonio, TX	Design
Railcar Inspection Improvements, Eagle Pass, TX	Design

UTILITY CONFLICTS	
60" Microtunnel, 24" DIP & 1000' of 42" DIP placed by trenching - Stafford, VA	CM&I
CM&I of expose existing splice handholes between Cincinnati and Cleveland on CSX (250 miles) and re-splice high loss fibers (2)	CM&I
Demolition of existing structures and utilities on a leased parcel for CSX, Montgomery, AL	CM&I
Two 48" Jack and Bores and 1291' of longitudinal pipeline for CSX, Clarksburg, WV	CM&I
Installing 20" steel pipeline via HDD for CSX customer, Apollo Beach, FL	CM&I
Relocation of FOC from the Ohio River bridge for CSX, Covington, KY	CM&I
Excavation of existing 20" pipeline and make repairs for CSX, Charlotte, NC	CM&I
CM&I of replacement of existing transmission line poles located parallel to CSX ROW in Lawtey, FL	CM&I
365' of a 36" steel pipe crossing via Jack and Bore of CSX tracks, South Weldon, NC	CM&I
42" Jack and Bore for CSX, Wallace, WV	CM&I
Installation of 20-inch steel casing via HDd , Smithfield, WV	CM&I
Construction of a 24" steel casing and manhole via jack and bore for CSX, Birmingham, AL	CM&I
42" Jack and Bore, Cowen, WV	CM&I
210' of 36" steel pipe crossing via Jack and Bore of CSX tracks, Garysburg, NC	CM&I
CSX Jack and Bore in Ransom, WV	CM&I
Pipeline survey for CSX in Richmond, VA	CM&I
Subgrade installation of twin 36" box culverts and a new conveyor with catwalk	CM&I
Installation of one 15" PVC 4' below grade, construct a lift station and a 15' x 15' control panel compound, Huntington, WV	CM&I
184' of 36" steel pipe crossing via Jack and Bore of CSX tracks, East Garysburg, NC	CM&I
Installation of 36-inch steel casing via Jack and Bore, Reader, WV	CM&I
240' of 24" steel pipe crossing via Jack and Bore of CSX tracks, Smithton, PA	CM&I
Access of existing 6" steel gas main and replacing rollers, hangers, shield, and wrap with wax tape over CSX tracks, Smyrna, GA	CM&I
150' of 36" steel pipe crossing via Jack and Bore of CSX tracks, South Garysburg, NC	CM&I

DESIGN-BUILD SIT YARDS	
1,500 Car SIT Yard, Beaumont, TX	DESIGN-BUILD
1,000 Car SIT Yard, Pasadena, TX	DESIGN-BUILD
575 Car SIT Yard, Orange, TX	DESIGN-BUILD
500 Car SIT Yard, Pasadena, TX	DESIGN-BUILD
521 Car SIT Yard, Westlake, LA	DESIGN-BUILD
450 Car SIT Yard, Nederland, TX	DESIGN-BUILD

# PTRA Hunting Bayou Bridge

## Houston, Texas



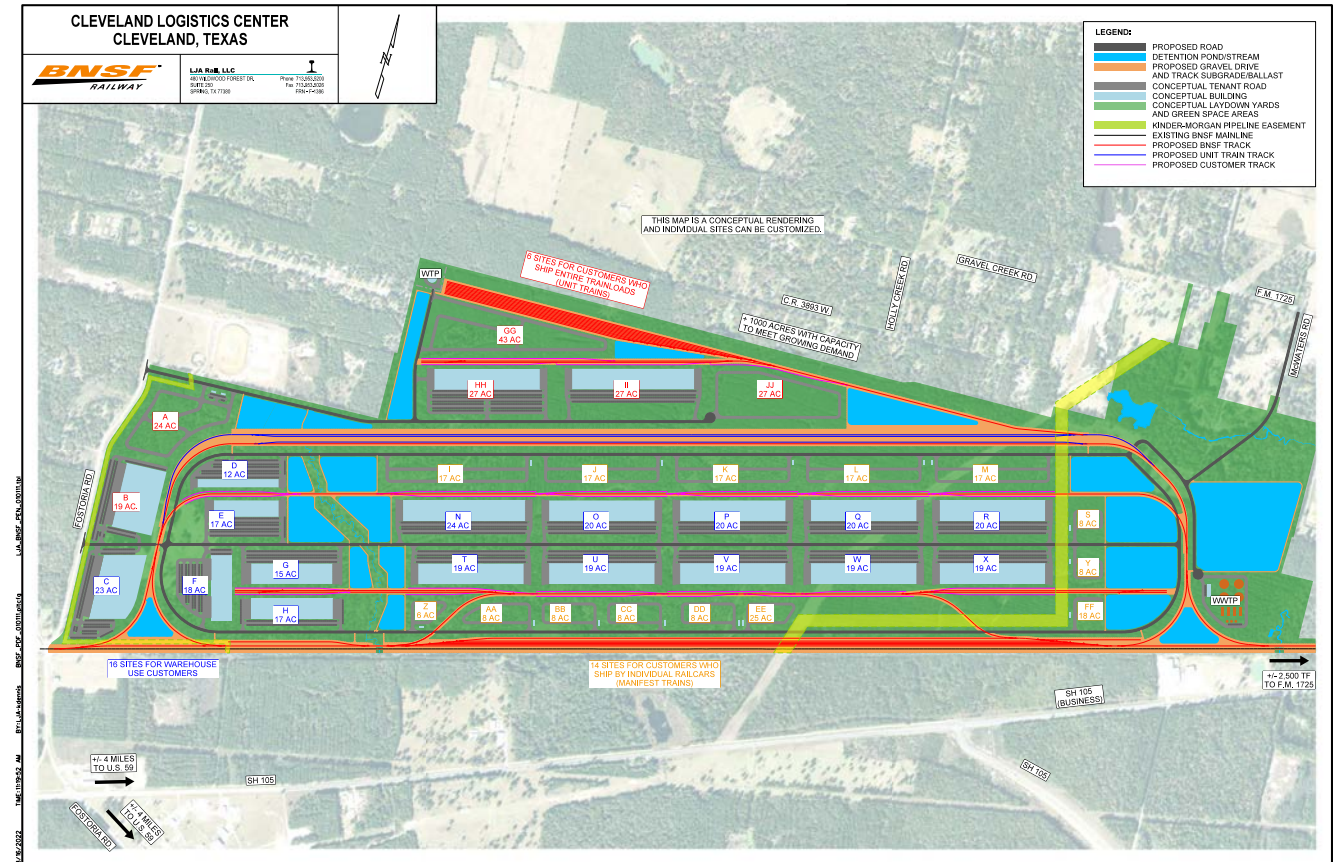
LJA Rail performed the design for a double track, 210-foot pre-stressed concrete bridge with a 20 mile per hour design speed, crossing Hunting Bayou at the North End of American Yard. Besides the actual bridge design, LJA's services included all track design, permitting to build the bridge including tidal permit, drainage structures, survey, soil samples, right-of-way exhibits, and the acquisition of required permits.

LJA Rail prepared the bid documents and specifications for the bid process, along with the actual bid packages to be sent out to prospective bidders. Once construction began, LJA provided on-site construction management services for the project including project oversight, daily and weekly reports, as-built drawings verification, punch list development, and construction support to address design questions during construction. The bridge project was constructed next to an existing railroad bridge with no interruptions to railroad traffic at any time during construction. LJA worked with the contractor to help ensure a safe environment that would not impact railroad operations.

**CLIENT**  
Port Terminal Railroad Association (PTRA)

# Logistics Center North Houston at Cleveland

## Cleveland, Texas



**CLIENT**  
BNSF Railway Co.

LJA Rail is providing design and construction management services for a proposed BNSF Logistics Center in Cleveland, TX. The 1,200-acre site is proposed to have over 40 tracts available for manifest / warehouse, unit train, or transload customers. LJA developed conceptual design alternatives and cost estimates; is preparing construction plans, specifications, and bid documents; and is providing construction management services for the proposed facility. The early phases of the project include over 10.5 miles of track, 9.5 miles of roadway, and mass grading and drainage for the entire site.

A water plant, elevated storage tank, and distribution lines were designed to provide potable water for the site. Sanitary sewers, lift-stations, and a wastewater plant were designed to provide wastewater collection, treatment, and disposal for the site. LJA is responsible for coordinating with local private utility providers for electricity, natural gas, and fiber optic communication to serve the site.

## GT Logistics 2011-2012 Rail Terminal

Port Arthur, Texas



### CLIENT

GT Logistics

The GT Logistics 2011-2012 Rail Terminal Construction began receiving cars for the UPRR's Sabine Industrial Lead in April, 2012. The project, located on 1,200 acres, consists of approximately nine miles of new track alignment including a loop track of sufficient length to accommodate unit train handling, six 3,500' storage tracks and two 3,500' tracks to be used for the unloading of crude oil from unit trains. LJA Rail designed tracks, loading racks, pipelines, storage tanks, rail bridges, and drainage for the 1,200-acre site. All of the track infrastructure including, rail, ties, OTM, ballast, sub-ballast, and sub-grade preparation were designed in accordance with UPRR Standards.

## BNSF Capacity Expansion Project

Nebraska



### CLIENT

BNSF Railway Co.

- 31,000 TF expansion project
- Construction management
- Environmental services
- Safety monitoring
- Contractor performance monitoring
- Inspection services
- Materials testing oversight
- Reporting

# BNSF Loop 375/Caesar Chavez/Border Highway

El Paso, Texas



**CLIENT**  
BNSF Railway Co.

- 6 miles public project and track realignment
- 24/7 construction management
- Safety monitoring
- Contractor performance monitoring
- Inspection services
- Materials testing oversight
- Daily reporting

# Bay Coast Railroad/NPBL Public Projects



**CLIENT**  
Bay Coast Railroad

- Public projects review and management
- Process management
- Application handling
- Engineering reviews
- Construction monitoring
- Contract administration
- Force account management
- Flagging coordination
- Daily reporting

## PTRA North Yard Round House

Houston, Texas



**CLIENT**  
PTRA

The PTRA North Yard accommodates up to 15 trains per day with a capacity of over 1,600 railcars. Flooding and associated drainage on the site was a critical issue involving not only resolution of the drainage problem, but replacement of a decades-old, failing system. At each step of the way, we made all necessary provisions to keep the rail yard operational, while facing the challenges such a project presents.

LJA Rail approached the Round House project as a two-part solution, which would resolve drainage issues and improve the overall geometry of the rail yard. We addressed and replaced the Round House rooftop's drainage system, which was contributing to the problem. While we improved the drainage of the fueling area that was past its service life, we installed a permanent oil-water separator to replace the temporary system currently in use. During construction, we made arrangements for ongoing locomotive fueling to continue without interruption keeping two bays open in the Round House at all times. Further, we moved the existing wheel axle storage tracks to accommodate relocation of the railroad crossing and we modified the concrete fueling pad in order to straighten the new tracks. The site houses an extraordinary number of existing above and below-ground utilities, presenting many challenges. We responsively addressed locating and working around these existing utilities throughout the project.

## Climax Siding Extension

Climax, Georgia



**CLIENT**  
CSX Transportation

CSX Transportation commissioned LJA Rail to provide engineering services for a siding extension as part of their capacity program for 2022. The design was to extend an existing siding to create a 13,000' siding in Climax, Georgia. LJA Rail's role involved complete design and bid documents services for track, drainage, grade crossings and structures. Track centers for the siding extension are 14' minimum. Design of the siding track alignment was based on a maximum operating speed of 40 mph. The project was put in service in 2023.

LJA Rail coordinated with various CSX departments as well as sub-consultants for Environmental Permitting, Signal, Power, Utilities, and Public Projects.

## BNSF Houston Automotive Facility

Houston, Texas

LJA Rail provided engineering services for the expansion of an existing automotive facility in Houston, Texas. LJA provided planning, design, permitting, scheduling, and full-time construction management services for the project. The project included a 22-acre parking lot expansion, over 15,000 TF of unloading track, drainage, high-mast lighting, security fencing, and gate improvements.

**CLIENT**  
BNSF Railway Co.

## Enterprise Chemical Company Rail Yard

Mont Belvieu, Texas

LJA Rail provided engineering services for the conceptual design of a rail yard rehabilitation project. LJA provided concept planning, operations analysis, and preliminary engineering through final design for a rail yard unloading facility. The existing facility had capacity for 40 cars per day. However, Enterprise wanted to determine the requirements for a yard with capacity to unload 80 cars per day. LJA identified customer and railroad requirements, prepared two best alternatives, and delivered a report containing all findings. LJA then prepared conceptual plans for the rehabilitation of the rail yard.

**CLIENT**  
Enterprise Chemical Company

## Cargoways Logistics Rail Spur

Houston, Texas

LJA Rail provided engineering services in all aspects of planning, from concept to design for a rail spur rehabilitation in Houston, Texas. LJA provided concept planning, and preliminary through final design for a rail yard spur. LJA worked closely with the customer to meet their requirements for the rail spur. LJA then provided plans for the rehabilitation of existing track work on Cargoways facility. Additionally, LJA provided detailed site plans for the future expansion of the facility.

**CLIENT**  
Cargoways Logistics

## Cadet Yard

San Antonio, Texas

LJA Rail was responsible for the planning, design, permitting, and full-time construction management of the 350 railcar yard. This yard includes 10 classification tracks, two (2) setout tracks, a departure track, and a switching lead. Cadet Yard, named in honor of those who serve at the nearby Lackland Air Force Base, serves as a hub where BNSF is able to break up and rebuild trains to move between San Antonio, the Gulf Coast, and on to Midwest. In addition to the track improvements, LJA prepared construction packages for the grading and drainage improvements, yard lighting, utility relocations, electrical improvements, compressed air system, security fencing with both track and vehicular gates, and roadway modifications in TxDOT right-of-way.

**CLIENT**  
BNSF Railway Co.

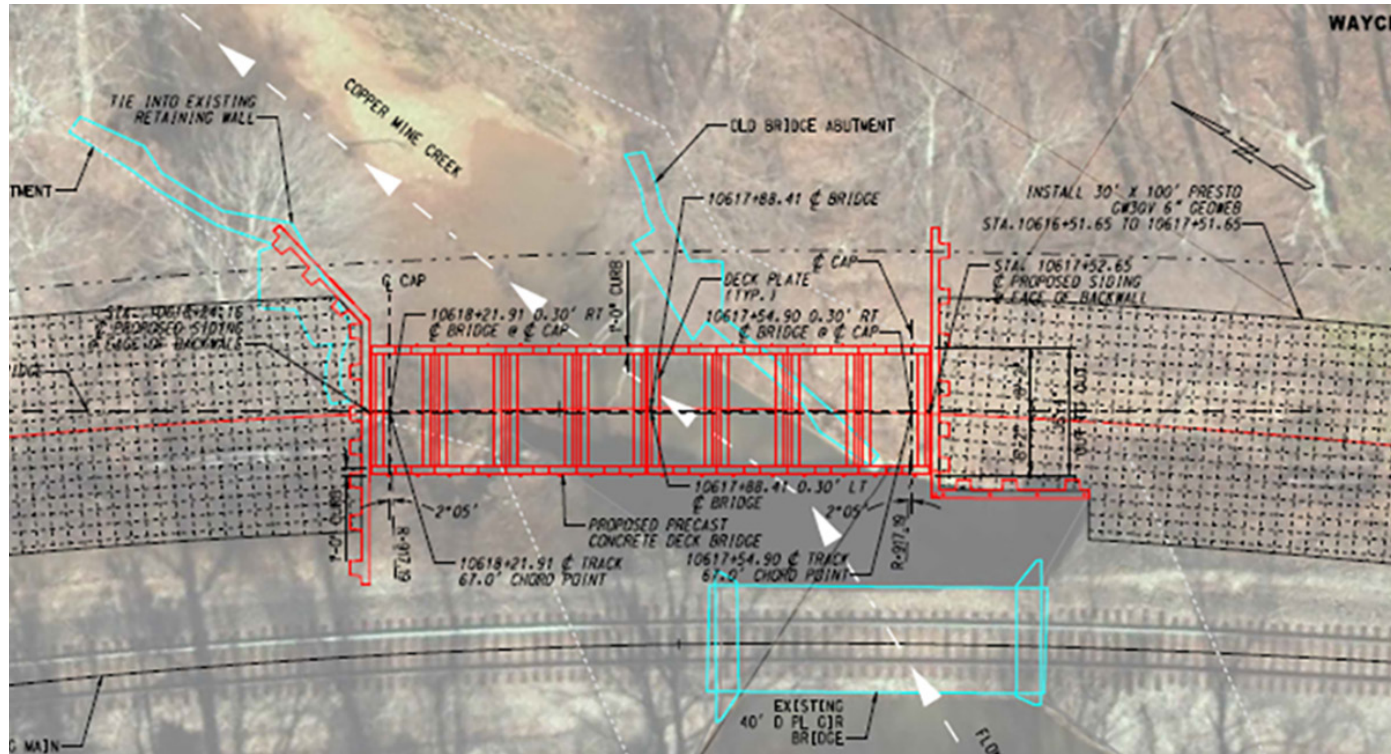


BNSF HOUSTON AUTOMOTIVE FACILITY



# Rail Siding Extension

Alabama



**CLIENT**  
CSX Transportation

LJA Rail was engaged to provide engineering services for one of CSX Transportation's highest profile projects. Due to its complexity and the large number of stakeholders involved, LJA was positioned to lead the team and provide full design and construction phase services in addition to subconsultant coordination. The project was completed on schedule by utilizing innovative and collaborative technical solutions.

LJA Rail provided design and bid documents, as well as construction support services including track, drainage, grade crossing, and structures. A large retaining wall, crash wall, and associated drainage structures were critical components of the project. A 70' steel concrete deck bridge and a 90' through plate girder bridge, designed using internal and external team resources with no established design criteria, posed challenges on this project. Additional challenges included working with the client to minimize property acquisition on federal and private lands and working with the geotechnical subconsultant to resolve issues with the extreme rock cuts and fills in the mountainous terrain. The LJA team coordinated with the client's designated representatives and subconsultants of multiple disciplines for environmental permitting, signal, power, utilities, and public projects.

## » LJA Rail Team

With this talented team, you are assured that your projects are undertaken and completed in a proactive, solutions-oriented, timely, and cost-effective manner.

The basis of our project organization is a strong and seasoned Project Manager, acting as a single point-of-contact, to lead a full-service collaborative of railroad professionals. Our organization offers an extremely responsive and adaptable work force that provides the highest quality services.

Staff will be allocated in a timely manner to ensure your project is appropriately staffed with the right resources to maximize efficiencies and quality.

**JASON REA**  
PRESIDENT



**EDUCATION**

BS Business Administration and Management, University of Phoenix  
Advanced Management Program, Harvard University

**SUMMARY OF QUALIFICATIONS**

Jason has over 25 years of extensive experience in engineering and operations within the Railroad Industry. Prior to joining LJA Rail, Jason led engineering and operations for Union Pacific's Southern Region where he climbed the ranks from Director to AVP Engineering. His successful career in the industry also includes serving on the Board of Directors for Alton & Southern Railway Company and serving as a member of the American Railway Engineering & Maintenance of Way Association (AREMA).

**MIKE R. BAKER, PE**  
RAIL INFRASTRUCTURE LEAD



**EDUCATION**

MBA, University of Houston; BS Civil Engineering, Texas A&M University

**PROFESSIONAL LICENSE**

Professional Engineer: Texas, California, Illinois, Florida, and Kansas

**SUMMARY OF QUALIFICATIONS**

Mike manages LJA Rail with responsibility for operations, project management, and business development. He has over 35 years of diverse railroad experience including three years of railroad research with the Texas Transportation Institute; 13 years of Class I railroad engineering operations, construction, and maintenance management; and over 19 years of railroad consulting and construction. With significant experience in railroad engineering, track maintenance, track construction, railroad operations and planning, leadership, and fiscal management, his successful turn-key solutions for railway projects include work with major railroads such as UPRR, BNSF and Kansas City Southern, as well as numerous rail districts, transit authorities, and port terminal railroad associations such as PTRA. His railroad experience also includes international projects located in Panama, Australia, Jamaica, Guinea, and Canada.



PASADENA RAIL YARD

## MIKE MIZE, PE

VICE PRESIDENT



### EDUCATION

BS Civil Engineering, Texas A&M University

### PROFESSIONAL LICENSE

1998, Professional Engineer, Texas #83973 and Alabama

### SUMMARY OF QUALIFICATIONS

Mike is an experienced project manager with more than 24 years of experience in planning, design, and construction of transportation and infrastructure projects. Mike has managed Class I railroad projects in Texas, Kansas, Nebraska, Iowa, and Minnesota. In addition, his rail experience includes projects for shortline railroads, port authorities, and industrial clients. As Senior Project Manager, Mike manages a group of rail engineers and designers working for Class I railroads throughout Texas and the Western United States.

## JOHN JEROME

VICE PRESIDENT



### EDUCATION

MBA, California Coast University

BBA, William Penn University

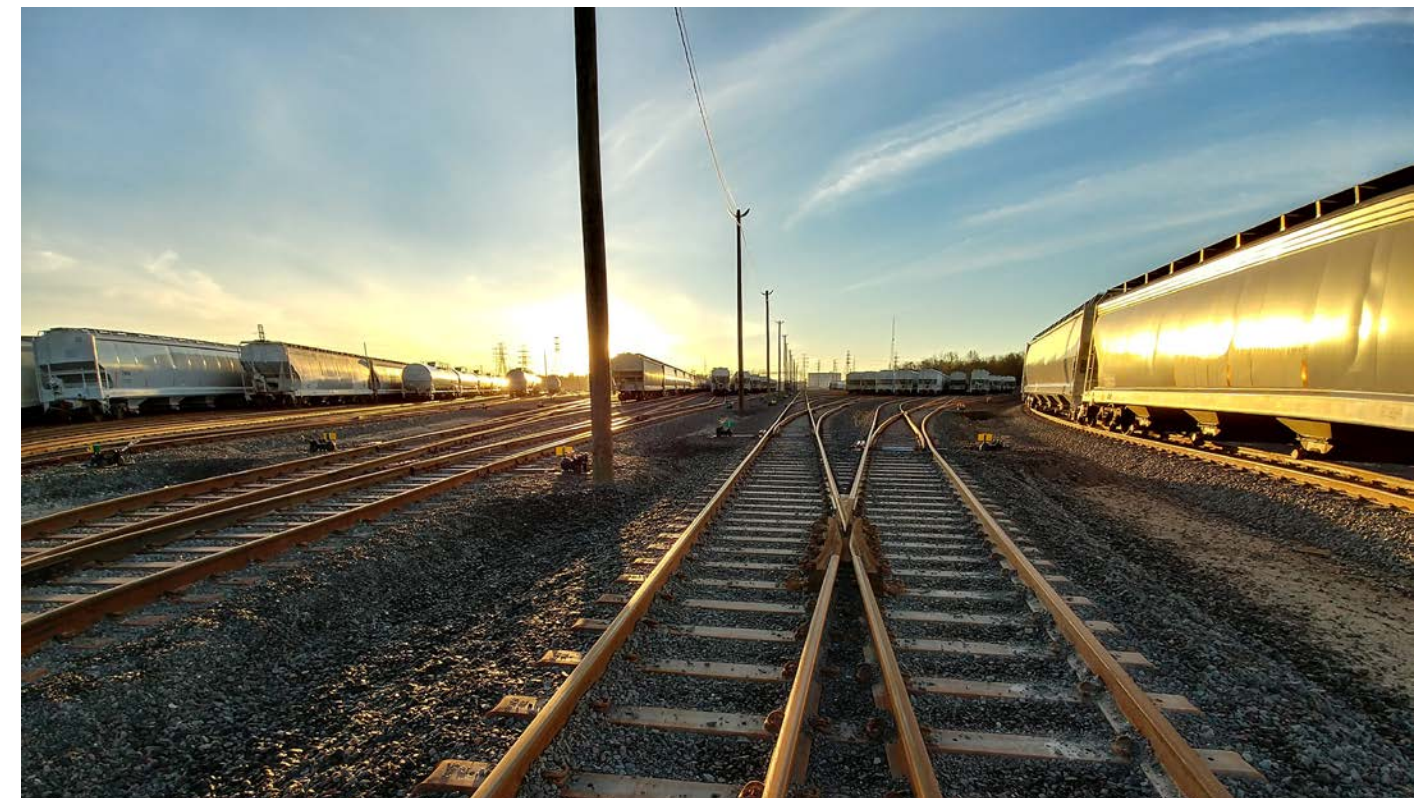
Executive Leadership Development Program, UPRR

### SUMMARY OF QUALIFICATIONS

Over three decades of leading multibillion-dollar construction projects have equipped John with an exceptional ability to drive progress and consistently exceed goals. His proven track record demonstrates success in timelines, budgets, and quality. John excels at forging strategic partnerships with stakeholders, contractors, and government officials, ensuring all parties are aligned for project success. He fosters a collaborative and innovative environment by cultivating diverse and inclusive teams. John's dedication extends beyond his projects; his 17-year membership in the American Railroad Engineering and Maintenance Association (AREMA) exemplifies his commitment to the industry.



BNSF SAN ANTONIO



## MIKE BELL, PE

VICE PRESIDENT



### EDUCATION

BS Civil Engineering, University of Florida

### PROFESSIONAL LICENSE

Professional Engineer, Florida

### SUMMARY OF QUALIFICATIONS

Mike is an expert in intermodal terminal development, railroad engineering, and freight railroad design; leading design teams and projects for more than 15 years. He has proven leadership ability in planning, design, and construction of freight railroad projects. He was previously the Director of CSX Intermodal Terminal Development and Environmental Affairs, where he oversaw his internal staff, several outside engineering companies, track contractors, design/build firms, environmental companies, and general contractors to manage CSX Intermodal projects. In this role, he was also responsible for coordinating and obtaining permits with federal, state and local entities.

## GENE BOWLES, PE

SENIOR PROJECT MANAGER



### EDUCATION

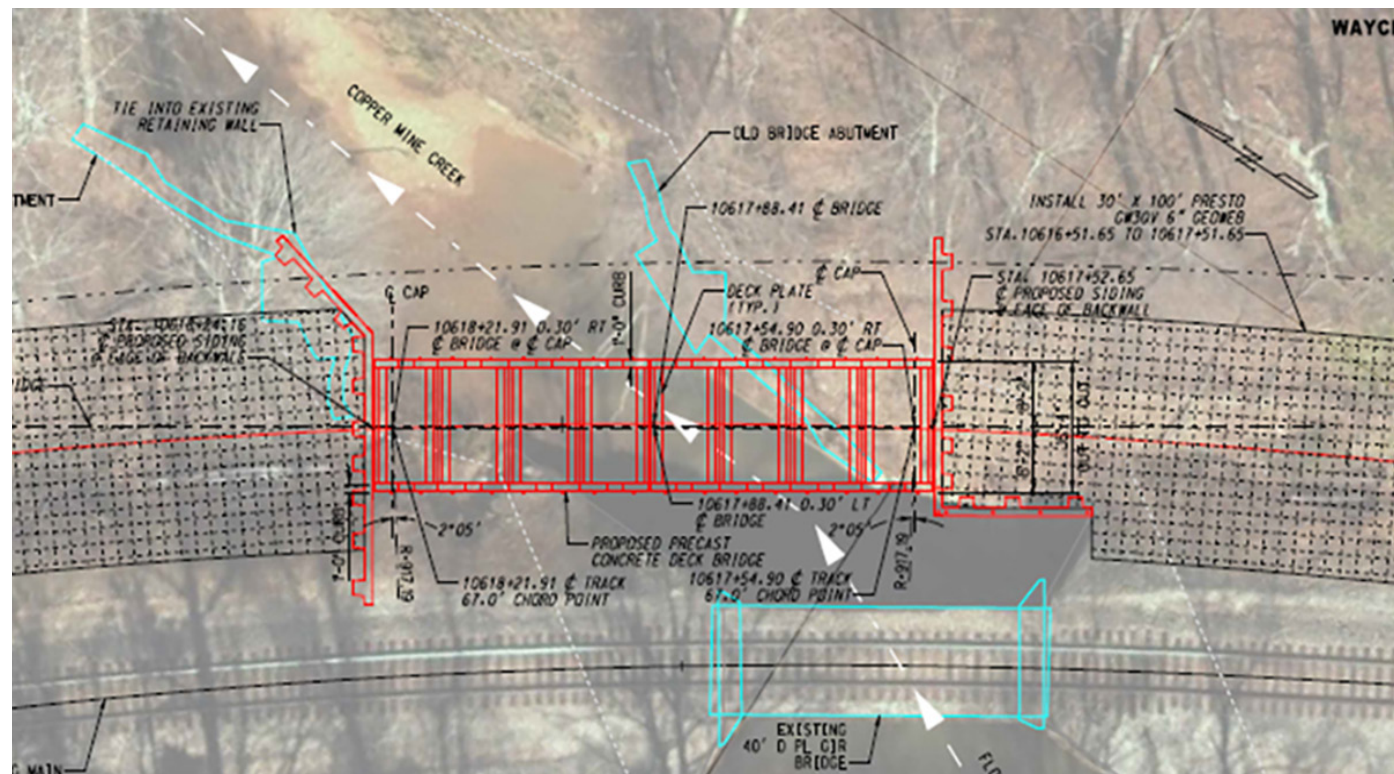
BS Civil Engineering, Texas Tech University

### PROFESSIONAL LICENSE

2010, Professional Engineer, Texas #107166

### SUMMARY OF QUALIFICATIONS

Gene is a licensed civil engineer with over 15 years of experience in various aspects of engineering and project management, the last 11 of which have been focused solely on civil and track improvement projects. Gene's project experience ranges from initial planning studies and corridor assessments to detail design and construction management. As part of LJA's Rail Services team, Gene's primary focus is on the conceptual and detailed design of track and civil improvements for BNSF throughout the Red River Division. Gene previously worked in Australia where he focused on rail and civil design in Central and Southeast Queensland.



CSX ALABAMA



BNSF ARDMORE



## BARRY GONDRON, PE, LEED

SENIOR PROJECT MANAGER

### EDUCATION

BS General Studies, University of Southwestern Louisiana

### PROFESSIONAL LICENSE

Professional Engineer, Arizona #45624  
Professional Engineer, Colorado #43674  
NCEES Registered, #31489  
LEED Green Associate #10704468

### SUMMARY OF QUALIFICATIONS

Mr. Gondron is a senior project manager for LJA's Rail Services Group. He has over 39 years of experience in the engineering design and construction management of heavy rail, light rail, commuter rail, and monorail projects. He has worked with various private and public agencies to enhance railway operations. Mr. Gondron acquired his freight railroad experience by working with the Southern Pacific Transportation Company for 17 years as their senior regional track designer.



## KYLE DENNIS, PE

SENIOR PROJECT MANAGER

### EDUCATION

BS Civil Engineering, Auburn University

### SUMMARY OF QUALIFICATIONS

Kyle is a licensed civil engineer with over 10 years of experience focused on civil and track improvements for Class 1, short-line, and industrial railroad improvement projects. His experience ranges from feasibility studies and corridor assessments through detail design and construction management. His current responsibilities include the conceptual and detailed design of network capacity and facility improvement projects for the BNSF Railroad in the Texas and Gulf region. Kyle's recent projects include sidings, double tracks, mainline relocation, automotive ramps, intermodal yards, logistics centers, classification yards, and SIT yards. His project experience also includes second mainline design projects for CSX in Alabama and Georgia.



BNSF GLENDALE



BNSF MYKAWA

## DAVID SWANK

RAIL CONSTRUCTION MANAGER



### EDUCATION

BS Structural/Ocean/Engineering, Texas A&M Galveston

### SUMMARY OF QUALIFICATIONS

Mr. Swank has over 20 years of engineering experience with a broad spectrum of experience including: project management, design, inspection, and cost estimating. He has the knowledge and experience coupled with ingenuity that provides safe, reliable, and cost-effective designs from concept to final design. His broad spectrum of experience gives him the ability to see beyond the written standard to produce effective solutions.

## DAVID ELDER

SENIOR PROJECT MANAGER



### EDUCATION

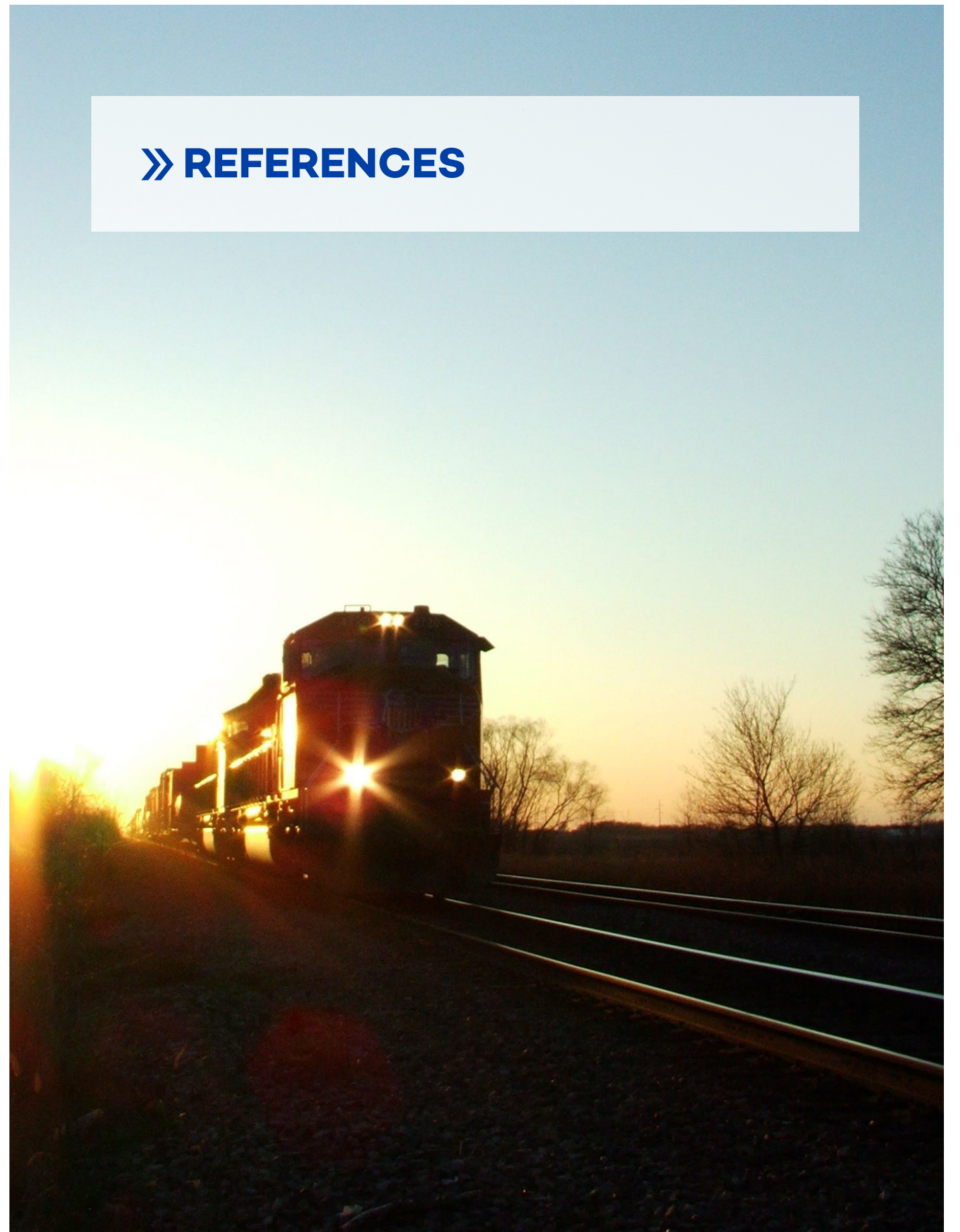
BS Civil Engineering, Old Dominion University

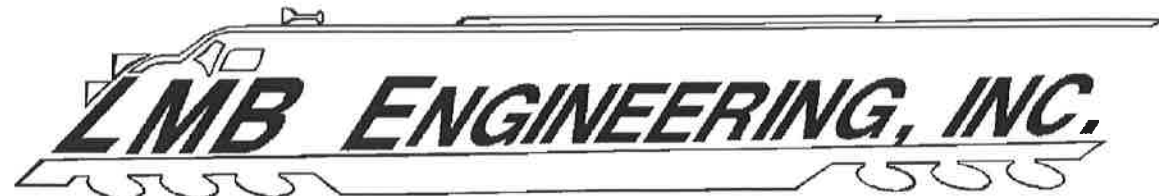
### SUMMARY OF QUALIFICATIONS

Dave Elder uses his experience in construction, subsurface engineering, operations, and utilities to deftly balance the challenge of administering large teams of engineers, while overseeing budgets and managing projects. His decades-long career includes an expertise in railroad engineering and overall operations.



## » REFERENCES





11999 Katy Freeway, Suite 560, Houston, Texas 77079

281-558-5577

May 22, 2015

To Whom It May Concern:

As president and principal engineer of LMB Engineering, Inc., I have had the privilege of working with Mike R. Baker, P.E., Director of Rail Services at LJA Engineering, Inc. in numerous railroad engineering design and construction projects during the past several years. These projects include railroad bridge and track design and construction, feasibility studies, rail yard design and construction, drainage studies and railroad bridge project management and inspections for several domestic and international enterprises.

LJA's Rail Services Team possesses vast and comprehensive experience in the areas of railroad engineering, design and construction. This experience coupled with their in-depth understanding of project management and contracting principles, and their attention to safety and detail, makes LJA an extremely valuable asset to any public or private entity with an interest in the area of railroad engineering and construction.

I absolutely recommend LJA Engineering's Rail Services to any domestic or international company looking for a dependable group of professionals with a proven track record and a strong work ethic. Feel free to contact me should you need any more information, I will be happy to discuss the excellent qualifications of Mr. Baker and the LJA Engineering Rail Service Team.

Sincerely,

Basilio D. Lakas, P.E.  
President  
[Blakas@lmbengr.com](mailto:Blakas@lmbengr.com)



Jeffrey Estes, P.L.S., E.I.  
Manager of Engineering  
Engineering Services

BNSF Railway Company  
4200 Deen Road  
Fort Worth, TX 76106  
Office 817.352.3562  
Cell 303.548.5717  
[Jeffrey.estes@bnsf.com](mailto:Jeffrey.estes@bnsf.com)

May 1, 2024

Mike Mize  
LJA Rail Services  
3600 W Sam Houston Parkway S Suite 600  
Houston, Texas 77042

Dear Mike

LJA Rail is one of my leading providers of engineering and construction management services. The BNSF has benefitted from your team's railroad expertise, quality designs, cost-effective solutions, and responsive service.

The LJA Rail Group has a "can do" attitude and is committed to helping us reach our project goals, while focusing on safety, schedule, and budget.

I appreciate the work LJA has done in the Red River Division for over 10 years. Your team has performed well on a variety of assignments, including planning studies, track and bridge designs, facility expansions, and logistic centers. I value the experience your team of railroaders brings to the field during construction and when problems arise on existing segments of the system.

Keep up the good work. I look forward to continuing our relationship as we expand the BNSF system to meet our customers' needs.

Very Respectfully,

Jeffrey C. Estes, Manager of Engineering  
BNSF Railway Company





PORT TERMINAL RAILROAD ASSOCIATION  
8934 MANCHESTER STREET - HOUSTON - TEXAS - 77012-2149



WALTER JOHNSON  
CEO

861 Ethyl Corporate Road  
Pasadena, TX 77503  
walter1939@gmail.com  
(713) 899-6500

1/14/2015

Darrell Himel  
Port Terminal Railroad Association  
8935 Manchester Street  
Houston, Texas 77012

LJA has been our primary provider of Engineering services for the last three years. Their railroad expertise, Engineering experience, contracting experience, and their can do attitude has benefited numerous PTRA projects including yard designs, bridge designs, drainage improvements, and facility designs. Specifically, their value added designs meet our requirements for safety and minimal train traffic interruptions.

We plan to continue our successful professional relationship with LJA to progress our capital project programs. Their construction management team is well experienced and very familiar with the railroad practices we require as well as rules knowledge of railroad and other agents laws/rules.

I highly recommend LJA Engineering as a quality provider of Rail Engineering Services.

Darrell Himel  
Superintendent of Maintenance  
Port Terminal Railroad Association

March 5, 2018

Subject: Performance Review – LJA Infrastructure

All Concerned

It is with great pleasure to offer my recommendation of LJA as a quality provider of Rail Services.

LJA Infrastructure provided exemplary engineering and construction services in the development of our premier 500 car storage facility in Pasadena, Texas. Their railroad expertise, engineering experience, contracting experience, integrity and can do attitude led to the safe and successful completion of our project in record time and within budget, despite having to deal with the effects of Hurricane Harvey.

After speaking with references that knew and had worked with the LJA team, we decided that Design/Build was the development model we needed. We couldn't be happier with the results. The yard is state of the art, very high quality, with excellent drainage, security and designed for very efficient switching operations. These features mean high efficiency through minimal maintenance and operation costs.

LJA kept things simple for us, easy to understand and kept us well informed regarding the work, the schedule and the budget. They were truly our advocate from the initial planning of the project through commissioning the yard. They were extremely collaborative and ended up saving us a significant amount of money by continually value engineering and managing the process every step of the way. We look forward to continuing our successful relationship with LJA on future projects.

Sincerely,

Walter Johnson  
CEO – Pasadena Rail